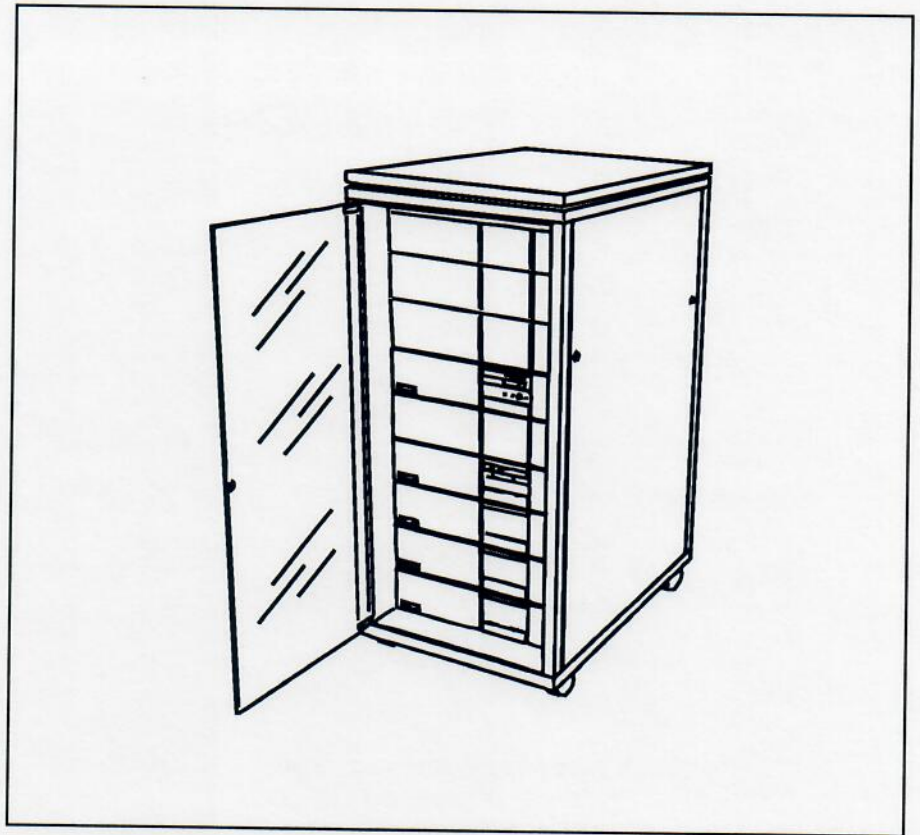


Configuration DS90-47



Basic system

The basic system comprises:

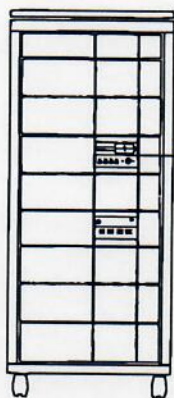
- Mother board with
 - Two processors and floating point processors M68040
 - Three SCSI ports
 - Two V24 asynchronous channels
- Power supply
- 3.5" diskette drive
- Expansion rack with six VME and two DataBoard slots
- D-NIX operating system for an unlimited number of users
- D-MENU, menu system and UNIX utilities

Use this configuration guide to select primary memory, mass storage, backup facilities and ports as required by the application.

DIAB DATA
A Bull Company

Diab Data AB, Box 544, S-182 15 Danderyd, Sweden. Tel +46 8 622 44 22. Fax +46 8 622 42 23.
Diab Data Inc., 323 Vintage Park Drive, Foster City, CA 94404, USA. Tel +1 415 571-1700. Fax +1 415 571-9068.

System expansion

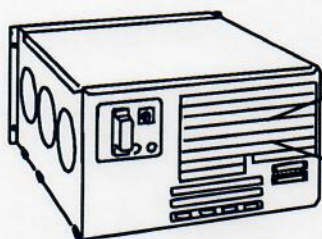


CPU expansion

The computer may be equipped with four more CPU planes in order to increase performance.

Memory expansion

The computer shall be equipped with sufficient primary memory. Memory modules are installed directly on the mother board.



Terminal concentrators

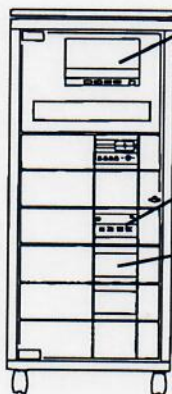
The number of asynchronous channels can be expanded with terminal concentrators.

The terminal concentrator 10xV.24 has ten channels and an onboard processor. The terminal concentrator thus does not load the main processor.

The terminal concentrator occupies one VME slot.

Expansion via VME

The computer has a VME rack for flexible expansion of communication and network ports (ComC/KOM-KIT II), ports for terminals (see above) and for connection of a 1/2" tape station. The VME boards are installed from the back of the computer.

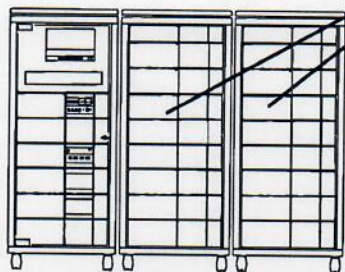


Backup units

Backup units are available in different versions, streamers, WORM, DAT, etc. The units are installed at the front of the computer.

Mass storage units

The computer should always be equipped with sufficient mass storage. Disk capacity can be expanded in steps.



Expansion cabinets

The system can be expanded using expansion cabinets. The number of mass storage units, backup units and serial ports can be increased through these cabinets.

UPS

For maximum operating reliability, the computer should be operated with a UPS and power fail indicator.

Min/max configuration

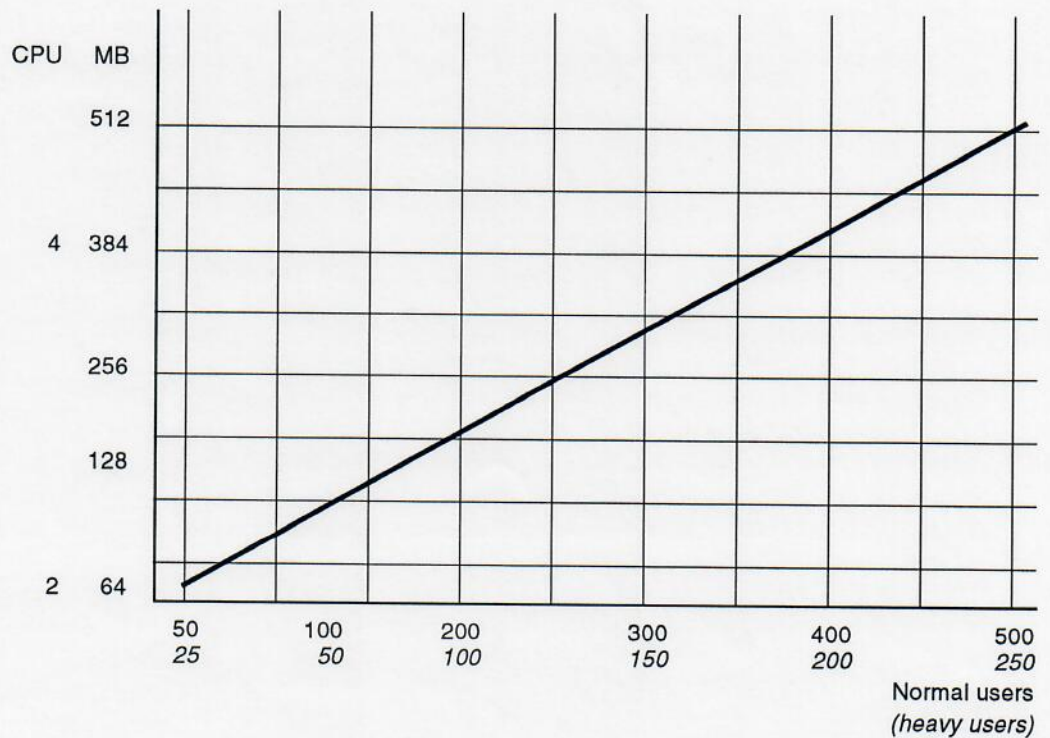
The computer may be configured within these limits. However, certain units can not be combined freely, see page 4.

Parameter	Min configuration	Max configuration
CPU	2	6
Primary memory	32 MB	512 MB (1024 MB)
Serial ports	2	252
Com ports	0	12
Network ports	1	7
Mass storage	500 MB	25 000 MB
Backup units	0	24 200 MB

Recommendations

The graph below shows how the computer may be expanded with primary memory in different applications. The expansion, however, depends very much upon the number and types of users as well as applications running on the system.

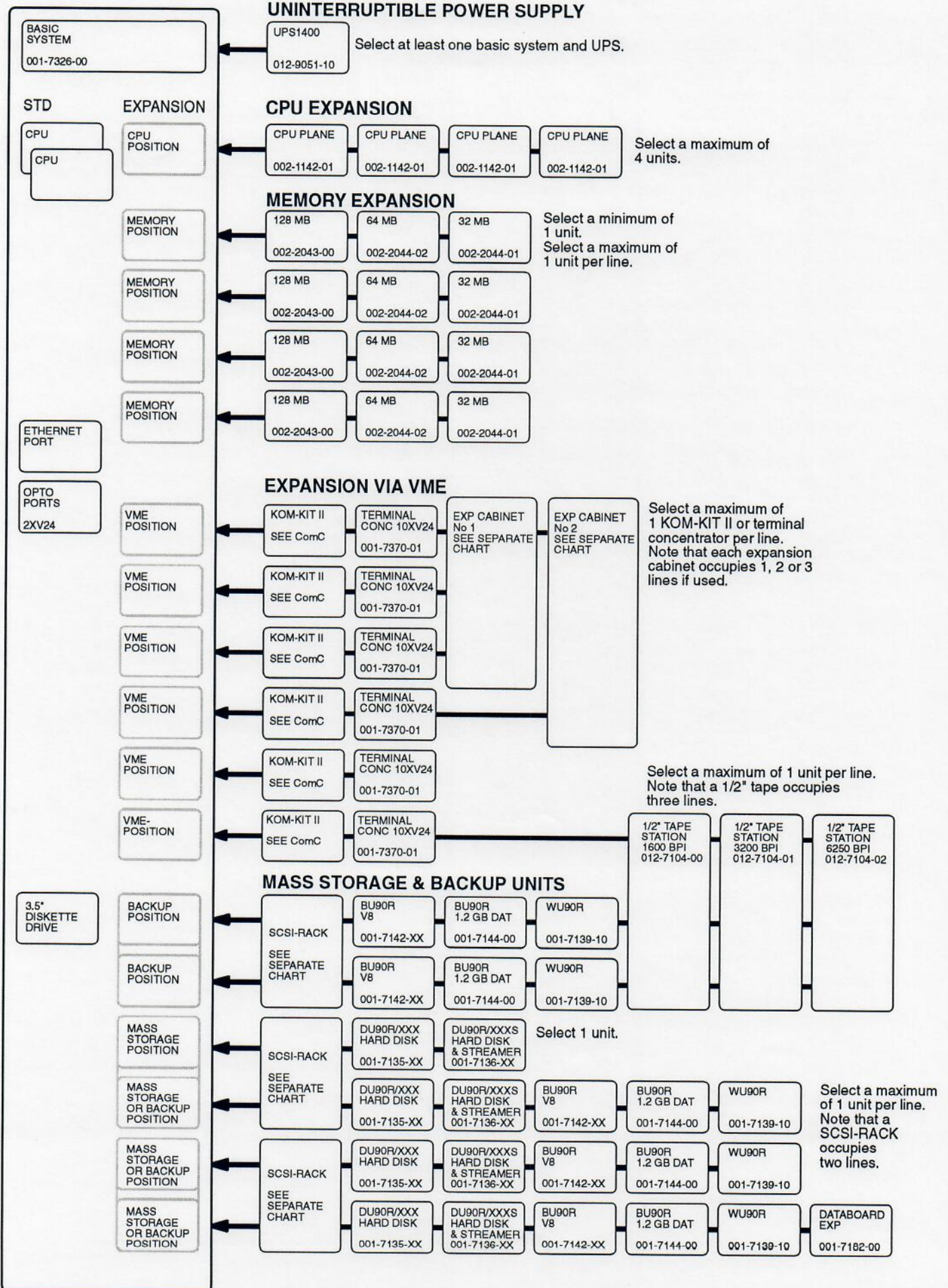
A normal user is defined as an office automation package user while a heavy user is defined as a 4GL or database user.



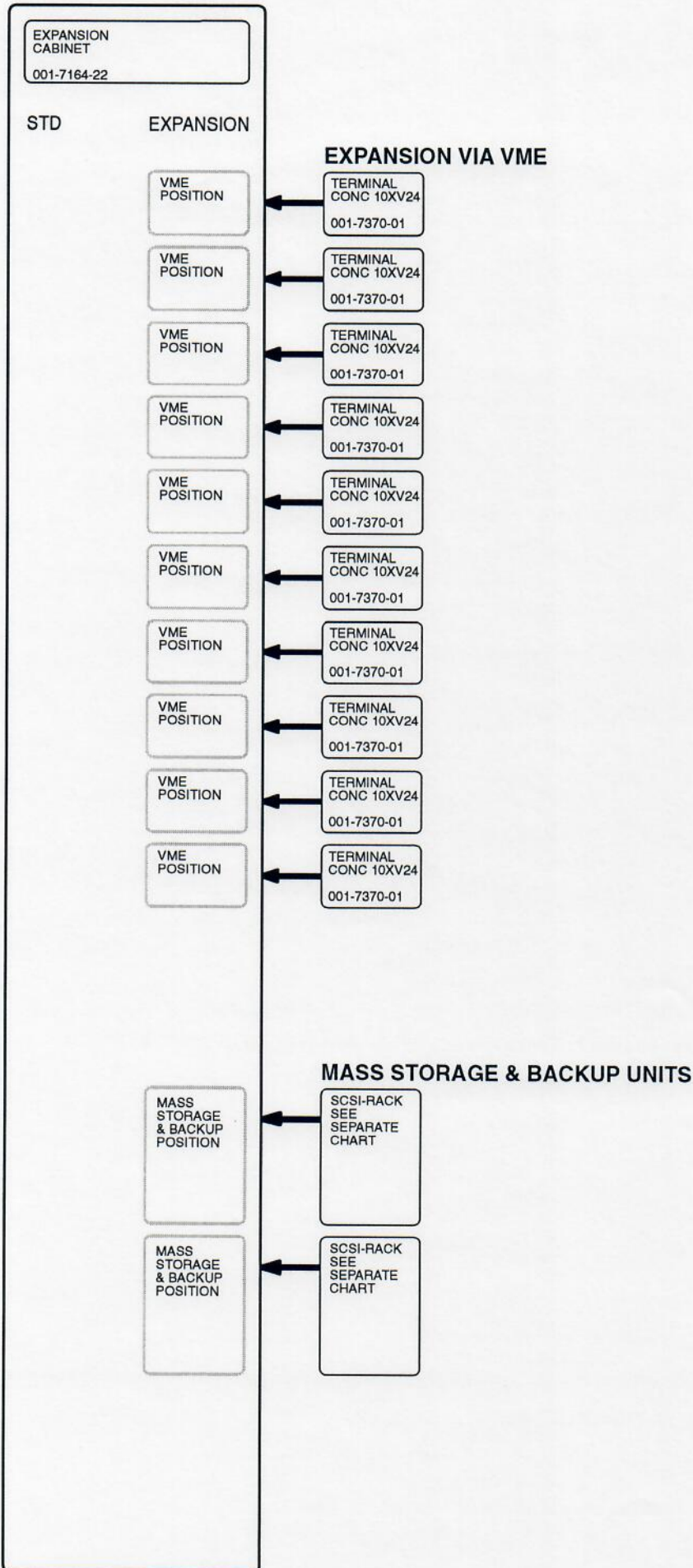
About the detail configuration...

Use the matrix on page 4 to configure the system. Cross out the units required in the actual system. At the same time, cross out expansion positions used. Please note the remarks regarding minimum numbers and the remarks regarding certain limitations in numbers and combinations.

Detail configuration - basic system



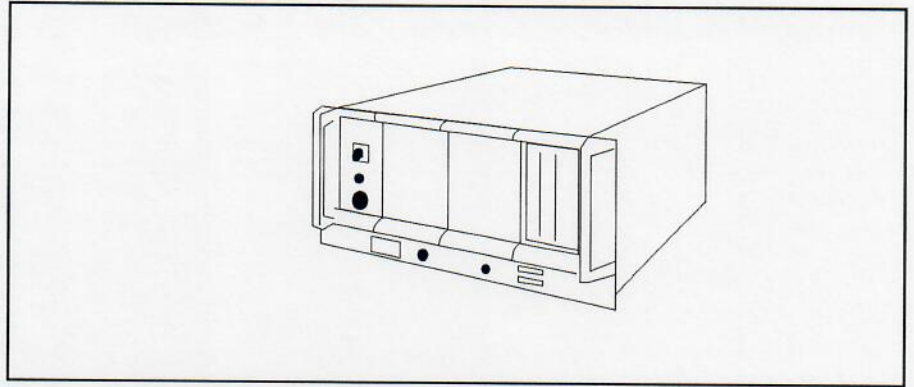
Detail configuration - expansion cabinet 1



Configuration SCSI-RACK

The unit comprises:

- three slots for mass storage and backup units
- power supply



Detail configuration

