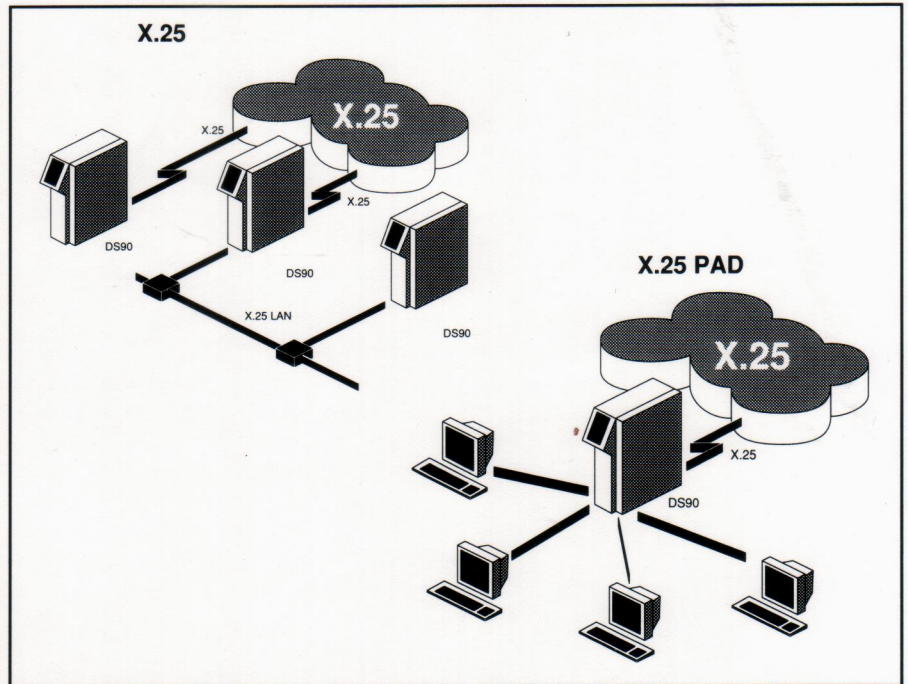


The international CCITT X.25 data communication standard provides a worldwide accepted reliable means of transferring data between multiple computer systems in units called 'packets'.

Generally, X.25 connections are provided by packet-switching services in the country of operation, with international connections managed by these services. It is also possible to use the X.25 protocol over dedicated lines.

One local connection to a packet-switching service is normally all that is required to enable data to be sent and received across even the most complex network.



DS90 and X.25

The DS90 X.25 gateway supports direct leased lines as well as packet-switching networks and the product can either act as DTE or DCE.

The DS90 X.25 can also be used between local area networks as a communication channel. In such installations the feature of data encryption and decryption can be used.

The X.25 services are operated under various names in different countries:

DataPak	Sweden
DATEX-P	West Germany
DATAPAC	Canada
PSS	United Kingdom
AUSTPAC	Australia
Telenet	USA
Tymnet	USA

The advantage of the DS90 X.25 solution is that the user can choose either private lines, public packet-switching services, local area networks (such as D-NET) or a mixture of them all to suit throughput requirements and to minimize communication charges.

PAD support

The X.25 PAD is a support product which allows a synchronous terminal connected to DS90 to use the X.25 network for connection with other systems.

Installation considerations

DS90 X.25 hardware

Running X.25 requires a DS90 system with a minimum of 1 MB of RAM and a communication processor installed in the extension slots.

The COM kit includes communication processor, modem cable and NETMAN software.

DS90 X.25 software

In addition to the NETMAN software, which is the base of all DS90 communication applications, the X.25 protocol has to be installed.

NETMAN is included in the COM kit.

Ordering information

COM kit	001-7095-XX
NETMAN S/W	072-8704-XX (included in COM kit)
X.25 S/W	072-8757-XX
X.25 PAD	072-8355-XX

XX is machine dependent

The specifications herein are given for information purposes only and are subject to alterations without prior notice.